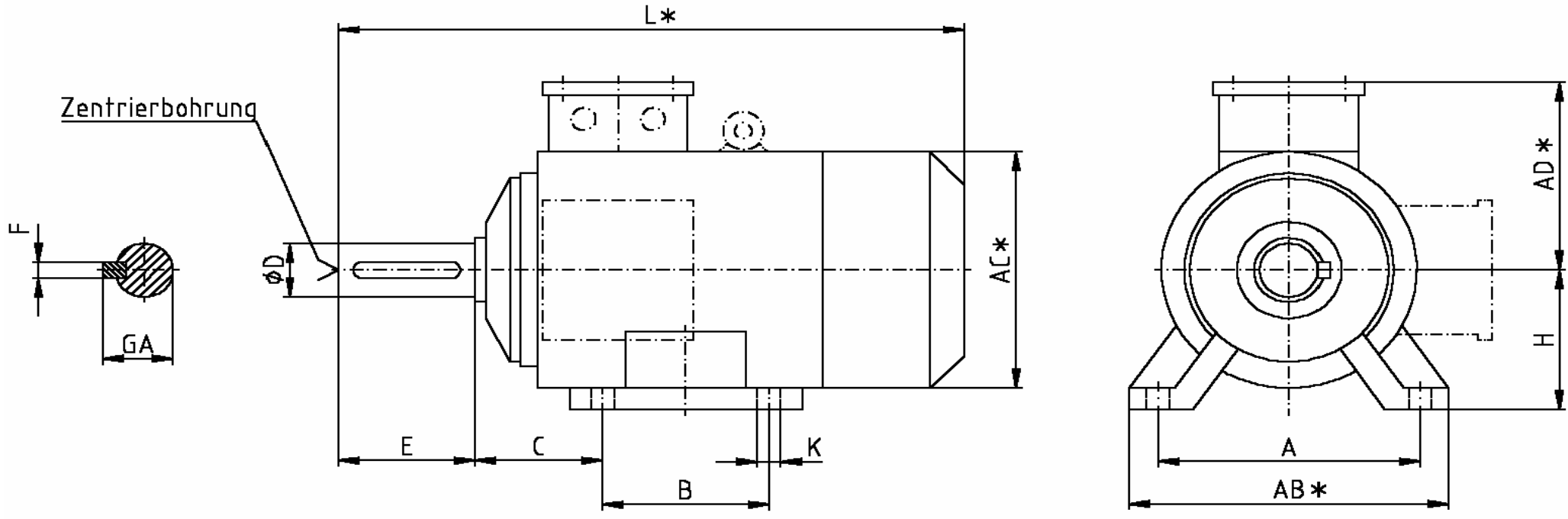


Kemmerich Elektromotoren

Motor-Bauform B3

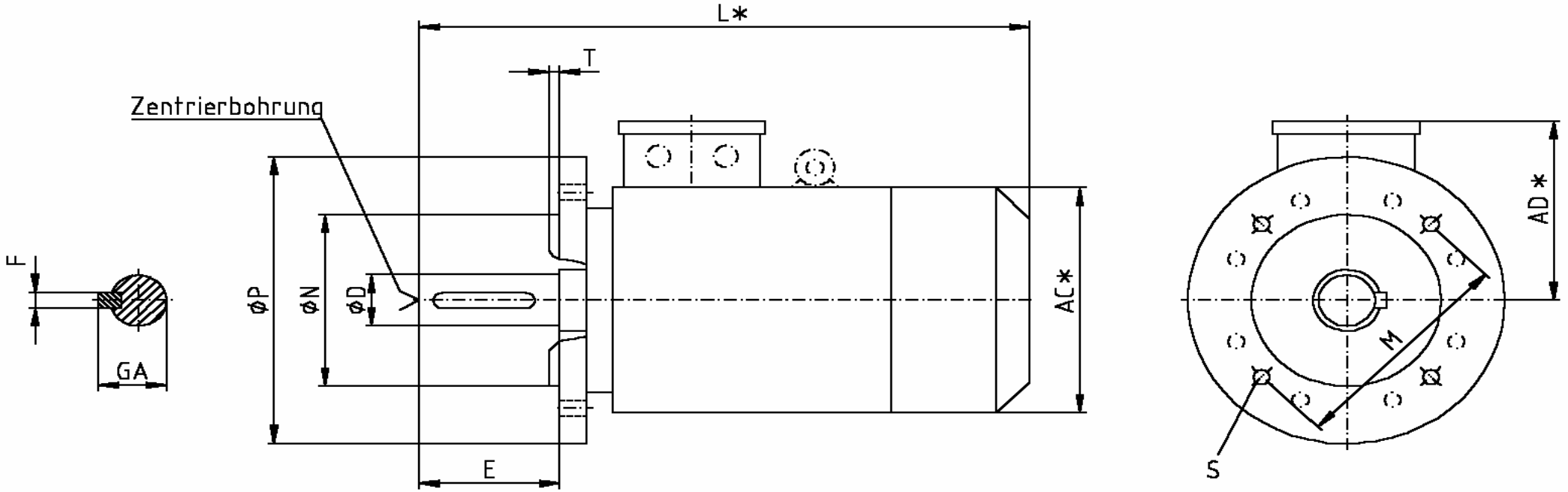


Form IM B3 (1001)

* unverbindlich/ without obligation

Kemmerich Elektromotoren

Motor-Bauform B5

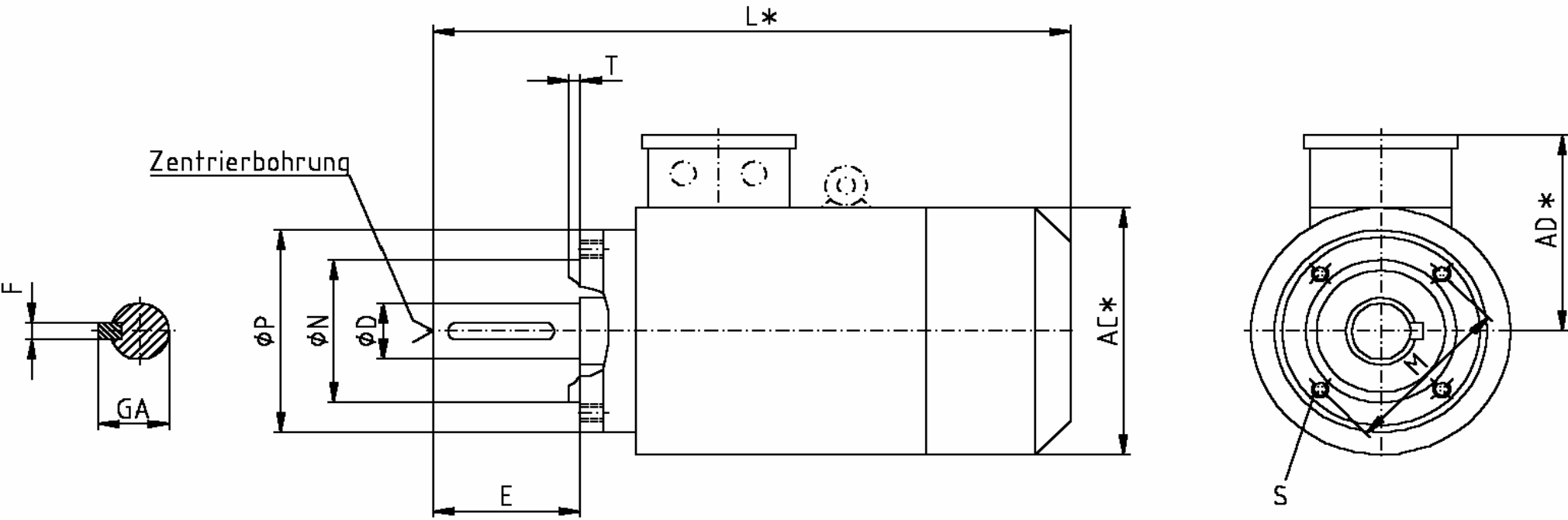


Form IM B5 (3001)

* unverbindlich/ without obligation

Kemmerich Elektromotoren

Motor-Bauform B14 (klein oder groß)

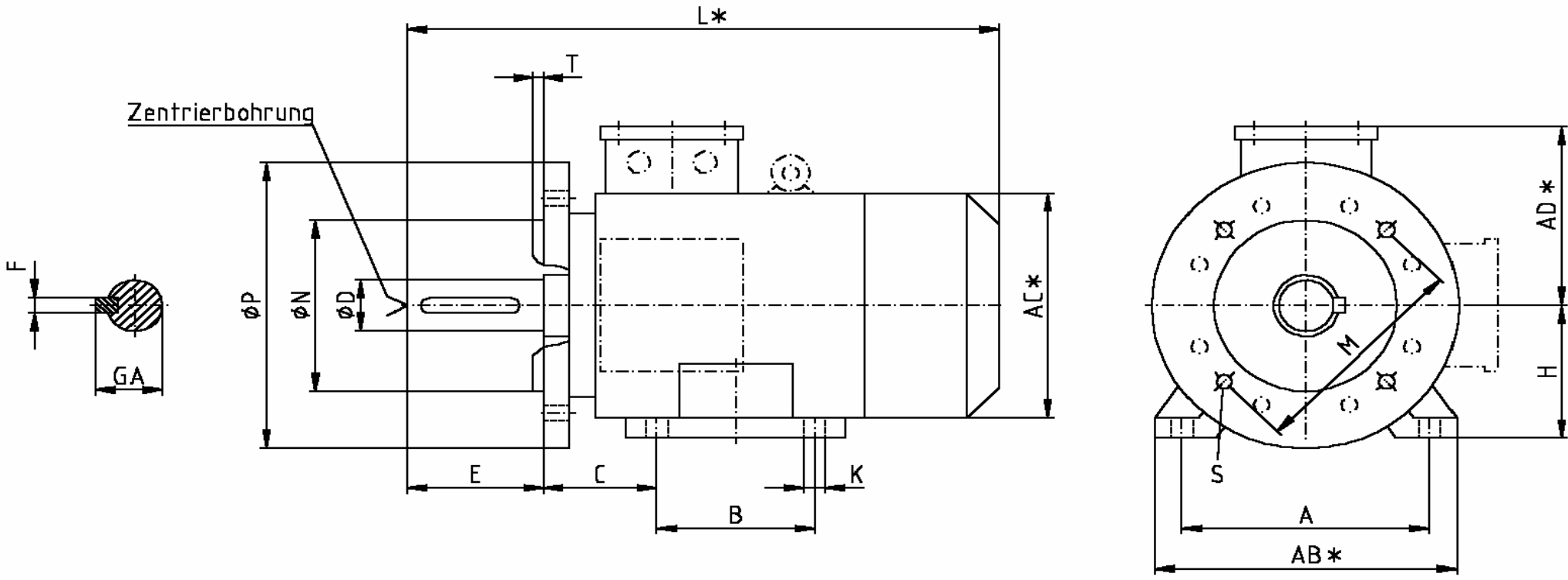


Form IM B14 (3601)

* unverbindlich/ without obligation

Kemmerich Elektromotoren

Motor-Bauform B3/B5



Form IM B35 (2001)

* unverbindlich/ without obligation

Alle Bauformen									IM B3 (1001)							IM B5 / V1 (3001), IM B3/B5 (2001)						IM B14k (3601) (small)							
IEC	Poles	AC*	H	L*	D	E	F	GA	A	AB*	AD*	B	C	HD*	HC*	K	EN***	M	N	P	S**	T	IEC	EN***	M	N	P	S**	T
DIN	Poles	g*	h	k*	d	l	u	t	b	f*		a	w1	p1*		s	DIN	e1	b1	a1	s1**	f1	DIN	DIN	e1	b1	a1	s1**	f1
56	2-8	120	56	187	9	20	3	10,2	90	112	101	71	36	152	112	5,8	FF100	100	80	120	4xM06	3,0	56	FT65	65	50	80	4xM05	3,0
63	2-8	130	63	212	11	23	4	12,5	100	128	101	80	40	162	130	6	FF115	115	95	140	4xM08	3,0	63	FT75	75	60	90	4xM05	3,0
71	2-8	148	71	240	14	30	5	16,0	112	138	111	90	45	195	145	7	FF130	130	110	160	4xM08	3,5	71	FT85	85	70	105	4xM06	3,5
80	2-8	175	80	276	19	40	6	21,5	125	157	120	100	50	214	175	9	FF165	165	130	200	4xM10	3,5	80	FT100	100	80	120	4xM06	3,5
90S	2-8	195	90	305	24	50	8	27,0	140	175	128	100	56	250	195	10	FF165	165	130	200	4xM10	3,5	90S	FT115	115	95	140	4xM08	3,5
90L	2-8	195	90	330	24	50	8	27,0	140	175	128	125	56	250	195	10	FF165	165	130	200	4xM10	3,5	90L	FT115	115	95	140	4xM08	3,5
100	2-8	215	100	371	28	60	8	31,0	160	198	163	140	63	270	215	12	FF215	215	180	250	4xM12	4,0	100	FT130	130	110	160	4xM08	4,0
112M	2-8	240	112	380	28	60	8	31,0	190	227	176	140	70	300	275	12	FF215	215	180	250	4xM12	4,0	112M	FT130	130	110	160	4xM08	4,0
132S	2-8	275	132	470	38	80	10	41,0	216	262	194	140	89	345	275	12	FF265	265	230	300	4xM12	4,0	132S	FT165	165	130	200	4xM10	4,0
132M	2-8	275	132	495	38	80	10	41,0	216	262	194	178	89	345	275	12	FF265	265	230	300	4xM12	4,0	132M	FT165	165	130	200	4xM10	4,0
160M	2-8	330	160	650	42	110	12	45,0	254	320	226	210	108	422	330	14	FF300	300	250	350	4xM16	5,0	160M	FT215	215	180	250	4xM12	5,0
160L	2-8	330	160	670	42	110	12	45,0	254	320	226	254	108	422	330	14	FF300	300	250	350	4xM16	5,0	160L	FT215	215	180	250	4xM12	5,0
180M	2-8	380	180	700	48	110	14	51,5	279	355	274	241	121	470	350	14	FF300	300	250	350	4xM16	5,0	IM B14g (3601) (big)						
180L	2-8	380	180	740	48	110	14	51,5	279	355	274	279	121	470	350	14	FF300	300	250	350	4xM16	5,0	IEC	EN***	M	N	P	S**	T
200L	2-8	420	200	770	55	110	16	59,0	318	395	308	305	133	525	390	18	FF350	350	300	400	4xM16	5,0	DIN	DIN	e1	b1	a1	s1**	f1
225S	4-8	470	225	850	60	140	18	64,0	356	435	339	286	149	574	494	19	FF400	400	350	450	8xM16	5,0	56	FT85	85	70	105	4xM06	3,0
225M	2	470	225	820	55	110	16	59,0	356	435	339	311	149	574	494	19	FF400	400	350	450	8xM16	5,0	63	FT100	100	80	120	4xM06	3,0
225M	4-8	470	225	850	60	140	18	64,0	356	435	339	311	149	574	494	19	FF400	400	350	450	8xM16	5,0	71	FT115	115	95	140	4xM08	3,5
250M	2	510	250	910	60	140	18	64,0	406	490	427	349	168	635	550	24	FF500	500	450	550	8xM16	6,0	80	FT130	130	110	160	4xM08	3,5
250M	4-8	510	250	910	65	140	18	69,0	406	490	427	349	168	635	550	24	FF500	500	450	550	8xM16	6,0	90S	FT130	130	110	160	4xM08	3,5
280S	2	580	280	1030	65	140	18	69,0	457	550	452	368	190	693	622	24	FF500	500	450	550	8xM16	6,0	90L	FT130	130	110	160	4xM08	3,5
280S	4-8	580	280	1030	75	140	20	79,5	457	550	452	368	190	693	622	24	FF500	500	450	550	8xM16	6,0	100	FT165	165	130	200	4xM10	4,0
280M	2	580	315	1035	65	140	18	69,0	457	550	452	419	190	693	622	24	FF500	500	450	550	8xM16	6,0	112M	FT165	165	130	200	4xM12	4,0
280M	4-8	580	315	1035	75	140	20	79,5	457	550	452	419	190	693	622	24	FF500	500	450	550	8xM16	6,0	132S	FT215	215	180	250	4xM12	4,0
315S	2	645	315	1160	65	140	18	69,0	508	635	610	406	216	845	697	28	FF600	600	550	660	8xM20	6,0	132M	FT215	215	180	250	4xM12	4,0
315S	4-8	645	315	1270	80	170	22	85,0	508	635	610	406	216	845	697	28	FF600	600	550	660	8xM20	6,0	160M	FT265	265	230	300	4xM12	5,0
315M	2	645	315	1190	65	140	18	69,0	508	635	610	457	216	845	697	28	FF600	600	550	660	8xM20	6,0	160L	FT265	265	230	300	4xM12	5,0
315M	4-8	645	315	1300	80	170	22	85,0	508	635	610	457	216	845	697	28	FF600	600	550	660	8xM20	6,0	Bohrung Wellenstirnseite (unverb.)*						
315L	2	645	315	1190	65	140	18	69,0	508	635	610	508	216	845	697	28	FF600	600	550	660	8xM20	6,0	56	a. A.		112		M10 x 1.50	
315L	4-8	645	355	1300	80	170	22	85,0	508	635	610	508	216	845	697	28	FF600	600	550	660	8xM20	6,0	63	M04 x 0.70		132		M12 x 1.75	
355M	2	710	355	1500	75	140	20	85,0	610	730	706	500	254	1010	752	28	FF740	740	680	800	8xM20	6,0	71	M05 x 0.80		160...180		M16 x 2.00	
355M	4-8	710	355	1530	95	170	25	106,0	610	730	706	500	254	1010	752	28	FF740	740	680	800	8xM20	6,0	80	M06 x 1.00		200...280		M20 x 2.50	
355L	2	710	355	1500	75	140	20	85,0	610	730	706	630	254	1010	752	28	FF740	740	680	800	8xM20	6,0	90	M08 x 1.25		315		a. A.	
355L	4-8	710	355	1530	95	170	25	106,0	610	730	706	630	254	1010	752	28	FF740	740	680	800	8xM20	6,0	100	M10 x 1.50		355		a. A.	

* unverbindliche Masse / without obligation - Gewindebohrung Wellenstirnseite muss bei Bedarf im Schriftverkehr angegeben werden

** zu verwendende Schrauben

*** Bauform nach DIN EN 50347

Hebeösen ab ca. Baugröße 100 vorhanden

© Kemmerich Elektromotoren Stand 01/2006

www.elektromotoren.de