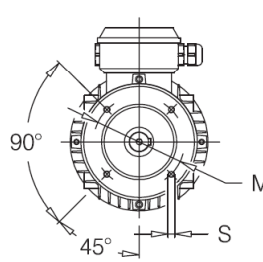
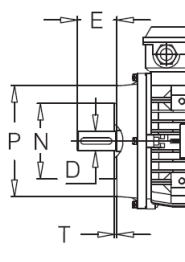
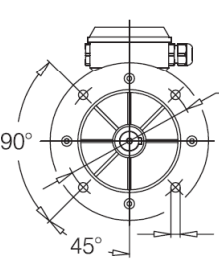
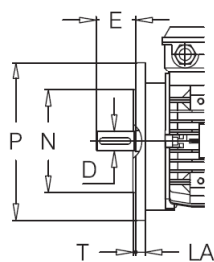
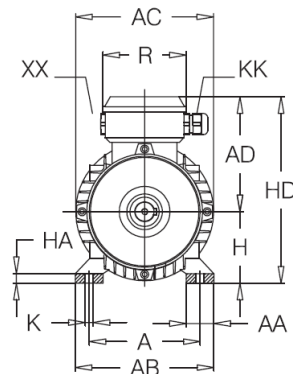
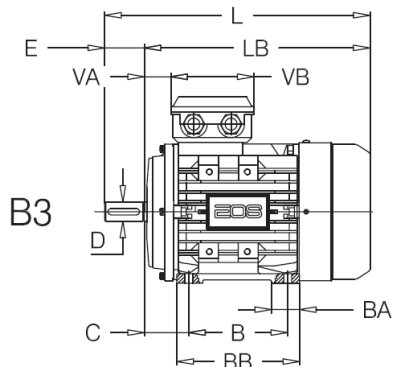


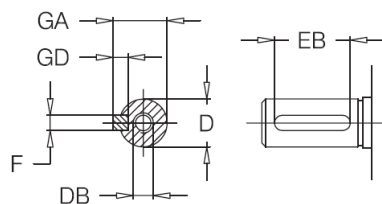
Abmessungen



B5

B14

Wellendende
Shaft end



Motorgröße	Klemmkasten				
	VA	VB	R	XX	KK
80L	27,5	105	105	M20	M20
90LL	32	105	105	M25	M25
112M	32	112	119	M25	M25
132M	37	112	119	M32	M32
160L	65	143	146	M40	M40 +M16

Motorgröße	Abmaße						Füße								
	AC	AD	H	HD	LB	L	A	B	C	AB	BB	AA	BA	HA	K
80L	157	135	80	215	254	294	125	100	50	160	130	35	35	11	10x13
90LL	174	143	90	233	283	333	140	125	56	175	155	35	33	12	10x13
112M	221	174	112	286	334	394	190	140	70	220	180	55	42	15	12x15
132M	258	193	132	325	390	470	216	178	89	252	212	58	40	15	13x16
160L	314	235	160	395	530	640	254	254	108	291	293	54	90	17	16x20

Motorgröße	Flansch							Welle							
	IM	M	Nj6	p	LA	T	S	D	DB	E	GA	F	GD	EB	
80L	B5	165	130	200	10	3,5	12	19	M6	40	21,5	6	6	32	
	B14	100	80	120	-	3	M6	j6	M6	40	21,5	6	6	32	
90LL	B5	165	130	200	12	3,5	12	24	M8	50	27	8	7	40	
	B14	115	95	140	-	3	M8	j6	M8	50	27	8	7	40	
112M	B5	215	180	250	14	4	15	28	M10	60	31	8	7	50	
	B14	130	110	160	-	3,5	M8	j6	M10	60	31	8	7	50	
132M	B5	265	230	300	14	4	15	38	M12	80	41	10	8	70	
	B14	165	130	200	-	3,5	M10	k6	M12	80	41	10	8	70	
160L	B5	300	250	350	15	5	15	42	M16	100	45	12	8	90	
	B14	215	180	250	-	4	M12	k6	M16	100	45	12	8	90	