

COLLET ER32
DIN 6499-C32

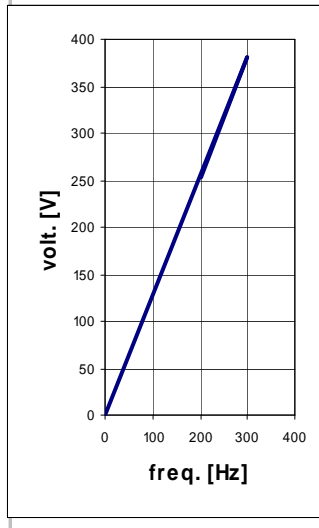
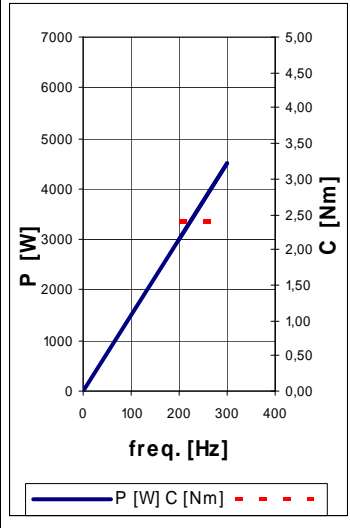
0,010 A

V (±10%)	380
Hz	50
rpm	18000
cos φ	0,86
IP	50
Ins. F	S1 (S6 40%)
Pol:	2
TA: 20°C	Sev: S1 (S6 40%)
IP: 50	Kg:

ELECTRIC CONNECTIONS	
Nr. Pin	Description
1	U Fase / Motor phase
2	V Fase / Motor phase
3	W Fase / Motor phase
4	** Bi-metallic
5	** Bi-metallic
⊕	Earth connection

** See "User's guide" for technical informations

PERFORMANCES AND MOTOR RATINGS		
Voltage	V ±10%	380
Output Power		4,5 (5,4)
Current	A	9,7 (11,6)
Frequency	Hz	300
rpm	rpm	18000
Torque	Nm	2,39 (2,86)
Front Bearing		angular contact bearings
Post. Bearing		radial
Efficiency	η	0,82
Power factor	cos φ	0,86
Poles		2
Service type		S1 (S6 40%)
Insulation class		F
Cooling		forced cooling
Weight	Kg	10
Type of Protection	IP	50



REV.	07/07/11	LL.		
	DATA	FIRMA	1:2	
DATA	09/04/08	09/04/08		
FIRMA	Burrioni L.	Frati R.		
VERNICIATURA :				
ØEGJ' ØAÉ I HG' YÎ FÎ GYÉÉ H' T VFÉJÉÉÉÉÜHGËI ÉXÖYËI ' FÎ ' F				Y6162Y0053