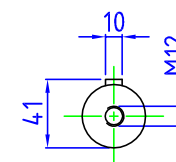


NOTE: USE OF CARCASSA DIS.N°082-17/B

DC MOTOR ME 132L N° XXXXXX/XX	
kW 7.5	HP rpm 2200
ARM.V 110 A 85	FIELD V 110 A XXX
B5 38.300	S 1 CL F IC 411 IP 54
TACHO	BRAKE

DRIVE END VIEW	
<p>C.W.</p>	<p>C.C.W.</p>



	x	x	x
FIRMA	DATA		REV.
		COD.	DIS.N° C699-04
World in Motion		ME132L MM-DX/10° Aø38 Fø300 B5 IC411 IP54	
		DISEGN.	DATA 01-04-21