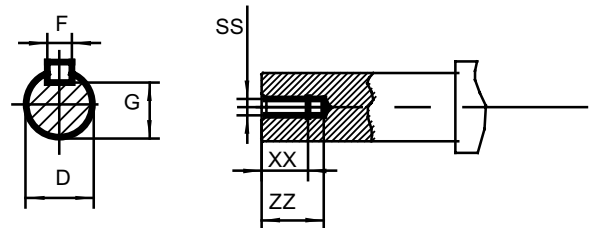
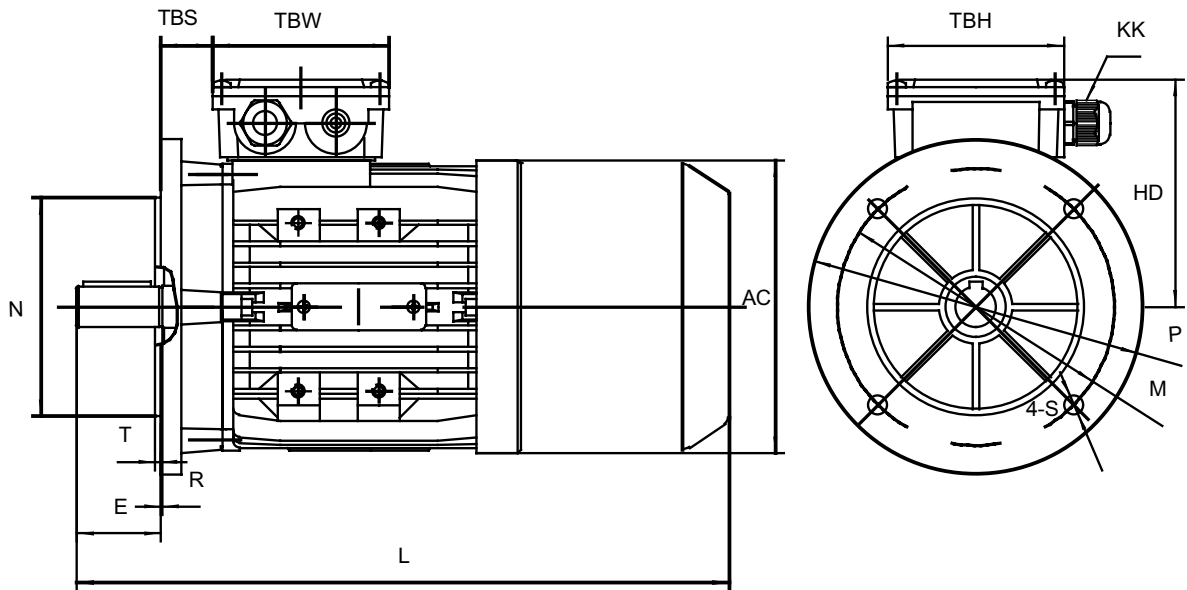


| FRAME | Foot Mounting | | | | Shaft | | | | | | | | General | | | | | | | |
|--------|---------------|-----|---------|-----|-------|-----|----|------|---------|-----|----|----|---------|-----|-----|------|---------|-----|-----|-----|
| | H | A | B | C | D | E | F | G | K | SS | XX | ZZ | AA | AD | HD | AC | L | TBS | TBW | TBH |
| 56 | 56 | 90 | 71 | 36 | Φ9 | 20 | 3 | 7.2 | 5.8*8.8 | M4 | 9 | 12 | 110 | 152 | 96 | Φ110 | 233 | 14 | 88 | 88 |
| 63 | 63 | 100 | 80 | 40 | Φ11 | 23 | 4 | 8.5 | 7*10 | M4 | 10 | 14 | 124 | 169 | 106 | Φ121 | 265 | 14 | 94 | 94 |
| 71** | 71 | 112 | 90 | 45 | Φ14 | 30 | 5 | 11 | 7*10 | M5 | 12 | 17 | 140 | 184 | 113 | Φ139 | 287/301 | 20 | 94 | 94 |
| 80 | 80 | 125 | 100 | 50 | Φ19 | 40 | 6 | 15.5 | 10*13 | M6 | 16 | 21 | 160 | 211 | 131 | Φ156 | 340 | 27 | 105 | 105 |
| 90S | 90 | 140 | 100 | 56 | Φ24 | 50 | 8 | 20 | 10*13 | M8 | 19 | 25 | 175 | 228 | 138 | Φ175 | 356 | 30 | 105 | 105 |
| 90L/L2 | 90 | 140 | 125 | 56 | Φ24 | 50 | 8 | 20 | 10*13 | M8 | 19 | 25 | 175 | 228 | 138 | Φ175 | 381/411 | 30 | 105 | 105 |
| 100** | 100 | 160 | 140 | 63 | Φ28 | 60 | 8 | 24 | 12*15 | M10 | 22 | 30 | 200 | 248 | 148 | Φ196 | 434/452 | 26 | 105 | 105 |
| 112 | 112 | 190 | 140 | 70 | Φ28 | 60 | 8 | 24 | 12*15 | M10 | 22 | 30 | 230 | 278 | 166 | Φ221 | 465 | 32 | 112 | 112 |
| 132S | 132 | 216 | 140 | 89 | Φ38 | 80 | 10 | 33 | 12*15 | M12 | 28 | 37 | 255 | 316 | 184 | Φ256 | 518 | 38 | 112 | 112 |
| 132M/L | 132 | 216 | 178 | 89 | Φ38 | 80 | 10 | 33 | 12*15 | M12 | 28 | 37 | 255 | 316 | 184 | Φ256 | 556/582 | 38 | 112 | 112 |
| 160M/L | 160 | 254 | 210/254 | 108 | Φ42 | 110 | 12 | 37 | 15*19 | M16 | 36 | 45 | 314 | 282 | 222 | Φ313 | 701 | 64 | 143 | 143 |

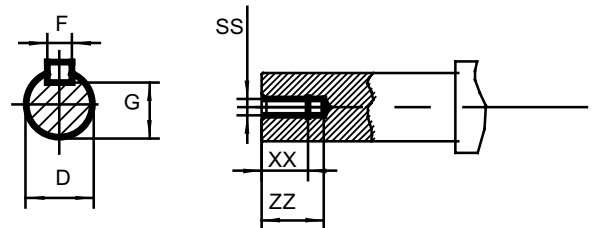
| FRAME | KK |
|-------|-----------|
| 56 | 1-M16*1.5 |
| 63 | 1-M16*1.5 |
| 71 | 1-M20*1.5 |
| 80 | 1-M20*1.5 |
| 90 | 1-M20*1.5 |
| 100 | 2-M20*1.5 |
| 112 | 2-M25*1.5 |
| 132 | 2-M25*1.5 |
| 160 | 2-M32*1.5 |

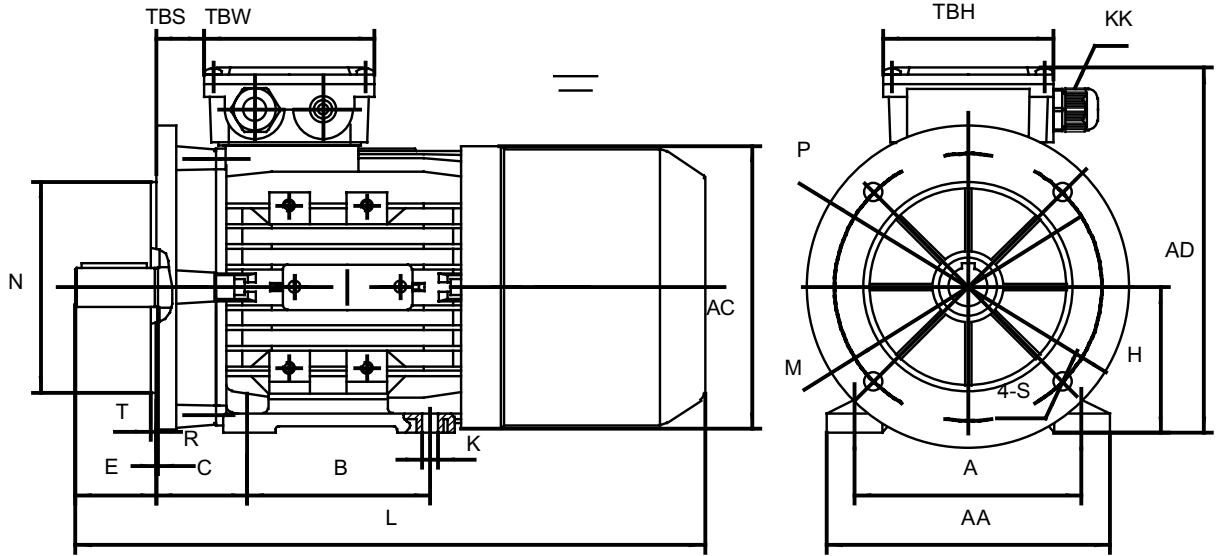




| FRAME | Foot Mounting | | | | Shaft | | | | | | | | General | | | | | | | |
|---------|---------------|-----|---------|-----|-------|-----|----|------|---------|-----|----|----|---------|-----|-----|------|---------|-----|-----|-----|
| | H | A | B | C | D | E | F | G | K | SS | XX | ZZ | AA | AD | HD | AC | L | TBS | TBW | TBH |
| 56 | 56 | 90 | 71 | 36 | Φ9 | 20 | 3 | 7.2 | 5.8*8.8 | M4 | 9 | 12 | 110 | 152 | 96 | Φ110 | 233 | 14 | 88 | 88 |
| 63 | 63 | 100 | 80 | 40 | Φ11 | 23 | 4 | 8.5 | 7*10 | M4 | 10 | 14 | 124 | 169 | 106 | Φ121 | 265 | 14 | 94 | 94 |
| 71** | 71 | 112 | 90 | 45 | Φ14 | 30 | 5 | 11 | 7*10 | M5 | 12 | 17 | 140 | 184 | 113 | Φ139 | 287/301 | 20 | 94 | 94 |
| 80 | 80 | 125 | 100 | 50 | Φ19 | 40 | 6 | 15.5 | 10*13 | M6 | 16 | 21 | 160 | 211 | 131 | Φ156 | 340 | 27 | 105 | 105 |
| 90S | 90 | 140 | 100 | 56 | Φ24 | 50 | 8 | 20 | 10*13 | M8 | 19 | 25 | 175 | 228 | 138 | Φ175 | 356 | 30 | 105 | 105 |
| 90L1/L2 | 90 | 140 | 125 | 56 | Φ24 | 50 | 8 | 20 | 10*13 | M8 | 19 | 25 | 175 | 228 | 138 | Φ175 | 381/411 | 30 | 105 | 105 |
| 100** | 100 | 160 | 140 | 63 | Φ28 | 60 | 8 | 24 | 12*15 | M10 | 22 | 30 | 200 | 248 | 148 | Φ196 | 434/452 | 26 | 105 | 105 |
| 112 | 112 | 190 | 140 | 70 | Φ28 | 60 | 8 | 24 | 12*15 | M10 | 22 | 30 | 230 | 278 | 166 | Φ221 | 465 | 32 | 112 | 112 |
| 132S | 132 | 216 | 140 | 89 | Φ38 | 80 | 10 | 33 | 12*15 | M12 | 28 | 37 | 255 | 316 | 184 | Φ256 | 518 | 38 | 112 | 112 |
| 132M/L | 132 | 216 | 178 | 89 | Φ38 | 80 | 10 | 33 | 12*15 | M12 | 28 | 37 | 255 | 316 | 184 | Φ256 | 556/582 | 38 | 112 | 112 |
| 160M/L | 160 | 254 | 210/254 | 108 | Φ42 | 110 | 12 | 37 | 15*19 | M16 | 36 | 45 | 314 | 282 | 222 | Φ313 | 701 | 64 | 143 | 143 |

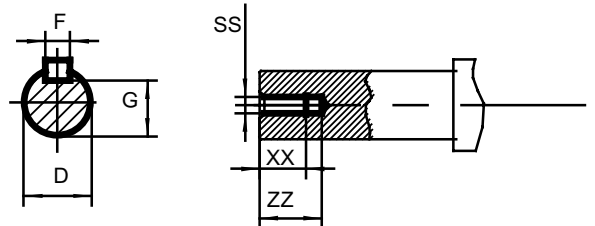
| FRAME | KK | B5 | | | | | | B5R | | | | | | |
|-------|-----------|------|------|------|-----|-----|---|------|------|------|-----|-----|---|--|
| | | N | M | P | S | T | R | N | M | P | T | S | R | |
| 56 | 1-M16*1.5 | Φ80 | Φ100 | Φ120 | Φ7 | 3 | 0 | | | | | | | |
| 63 | 1-M16*1.5 | Φ95 | Φ115 | Φ140 | Φ10 | 3 | 0 | | | | | | | |
| 71 | 1-M20*1.5 | Φ110 | Φ130 | Φ160 | Φ10 | 3.5 | 0 | Φ95 | Φ115 | Φ140 | 3 | Φ10 | 0 | |
| 80 | 1-M20*1.5 | Φ130 | Φ165 | Φ200 | Φ12 | 3.5 | 0 | Φ110 | Φ130 | Φ160 | 3.5 | Φ10 | 0 | |
| 90 | 1-M20*1.5 | Φ130 | Φ165 | Φ200 | Φ12 | 3.5 | 0 | Φ110 | Φ130 | Φ160 | 3.5 | Φ10 | 0 | |
| 100 | 2-M20*1.5 | Φ180 | Φ215 | Φ250 | Φ15 | 4 | 0 | Φ130 | Φ165 | Φ200 | 3.5 | Φ12 | 0 | |
| 112 | 2-M25*1.5 | Φ180 | Φ215 | Φ250 | Φ15 | 4 | 0 | Φ130 | Φ165 | Φ200 | 3.5 | Φ12 | 0 | |
| 132 | 2-M25*1.5 | Φ230 | Φ265 | Φ300 | Φ15 | 4 | 0 | Φ180 | Φ215 | Φ250 | 4 | Φ15 | 0 | |
| 160 | 2-M32*1.5 | Φ250 | Φ300 | Φ350 | Φ19 | 5 | 0 | | | | | | | |



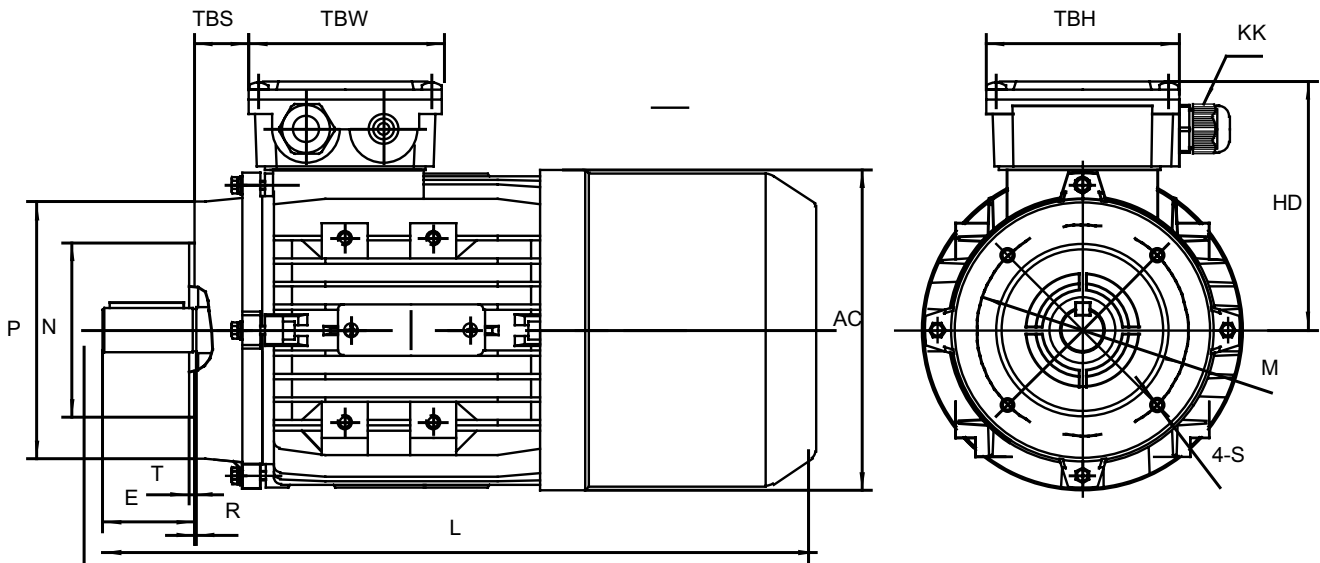


| FRAME | Foot Mounting | | | | Shaft | | | | | | | | General | | | | | | | |
|---------|---------------|-----|---------|-----|-------|-----|----|------|---------|-----|----|----|---------|-----|-----|------|---------|-----|-----|-----|
| | H | A | B | C | D | E | F | G | K | SS | XX | ZZ | AA | AD | HD | AC | L | TBS | TBW | TBH |
| 56 | 56 | 90 | 71 | 36 | Φ9 | 20 | 3 | 7.2 | 5.8*8.8 | M4 | 9 | 12 | 110 | 152 | 96 | Φ110 | 233 | 14 | 88 | 88 |
| 63 | 63 | 100 | 80 | 40 | Φ11 | 23 | 4 | 8.5 | 7*10 | M4 | 10 | 14 | 124 | 169 | 106 | Φ121 | 265 | 14 | 94 | 94 |
| 71** | 71 | 112 | 90 | 45 | Φ14 | 30 | 5 | 11 | 7*10 | M5 | 12 | 17 | 140 | 184 | 113 | Φ139 | 287/301 | 20 | 94 | 94 |
| 80 | 80 | 125 | 100 | 50 | Φ19 | 40 | 6 | 15.5 | 10*13 | M6 | 16 | 21 | 160 | 211 | 131 | Φ156 | 340 | 27 | 105 | 105 |
| 90S | 90 | 140 | 100 | 56 | Φ24 | 50 | 8 | 20 | 10*13 | M8 | 19 | 25 | 175 | 228 | 138 | Φ175 | 356 | 30 | 105 | 105 |
| 90L1/L2 | 90 | 140 | 125 | 56 | Φ24 | 50 | 8 | 20 | 10*13 | M8 | 19 | 25 | 175 | 228 | 138 | Φ175 | 381/411 | 30 | 105 | 105 |
| 100** | 100 | 160 | 140 | 63 | Φ28 | 60 | 8 | 24 | 12*15 | M10 | 22 | 30 | 200 | 248 | 148 | Φ196 | 434/452 | 26 | 105 | 105 |
| 112 | 112 | 190 | 140 | 70 | Φ28 | 60 | 8 | 24 | 12*15 | M10 | 22 | 30 | 230 | 278 | 166 | Φ221 | 465 | 32 | 112 | 112 |
| 132S | 132 | 216 | 140 | 89 | Φ38 | 80 | 10 | 33 | 12*15 | M12 | 28 | 37 | 255 | 316 | 184 | Φ256 | 518 | 38 | 112 | 112 |
| 132M/L | 132 | 216 | 178 | 89 | Φ38 | 80 | 10 | 33 | 12*15 | M12 | 28 | 37 | 255 | 316 | 184 | Φ256 | 556/582 | 38 | 112 | 112 |
| 160M/L | 160 | 254 | 210/254 | 108 | Φ42 | 110 | 12 | 37 | 15*19 | M16 | 36 | 45 | 314 | 282 | 222 | Φ313 | 701 | 64 | 143 | 143 |

| FRAME | KK | B35 | | | | | | B35R | | | | | | | | | | | | |
|-------|-----------|------|------|------|-----|-----|---|------|------|------|-----|-----|---|--|--|--|--|--|--|--|
| | | N | M | P | S | T | R | N | M | P | T | S | R | | | | | | | |
| 56 | 1-M16*1.5 | Φ80 | Φ100 | Φ120 | Φ7 | 3 | 0 | | | | | | | | | | | | | |
| 63 | 1-M16*1.5 | Φ95 | Φ115 | Φ140 | Φ10 | 3 | 0 | | | | | | | | | | | | | |
| 71 | 1-M20*1.5 | Φ110 | Φ130 | Φ160 | Φ10 | 3.5 | 0 | Φ95 | Φ115 | Φ140 | 3 | Φ10 | 0 | | | | | | | |
| 80 | 1-M20*1.5 | Φ130 | Φ165 | Φ200 | Φ12 | 3.5 | 0 | Φ110 | Φ130 | Φ160 | 3.5 | Φ10 | 0 | | | | | | | |
| 90 | 1-M20*1.5 | Φ130 | Φ165 | Φ200 | Φ12 | 3.5 | 0 | Φ110 | Φ130 | Φ160 | 3.5 | Φ10 | 0 | | | | | | | |
| 100 | 2-M20*1.5 | Φ180 | Φ215 | Φ250 | Φ15 | 4 | 0 | Φ130 | Φ165 | Φ200 | 3.5 | Φ12 | 0 | | | | | | | |
| 112 | 2-M25*1.5 | Φ180 | Φ215 | Φ250 | Φ15 | 4 | 0 | Φ130 | Φ165 | Φ200 | 3.5 | Φ12 | 0 | | | | | | | |
| 132 | 2-M25*1.5 | Φ230 | Φ265 | Φ300 | Φ15 | 4 | 0 | Φ180 | Φ215 | Φ250 | 4 | Φ15 | 0 | | | | | | | |
| 160 | 2-M32*1.5 | Φ250 | Φ300 | Φ350 | Φ19 | 5 | 0 | | | | | | | | | | | | | |

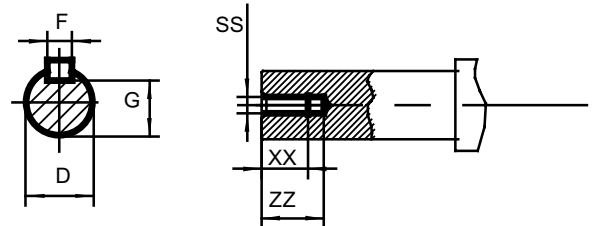


Der Hersteller behält sich technische Änderungen vor. All information under reserve of liability.

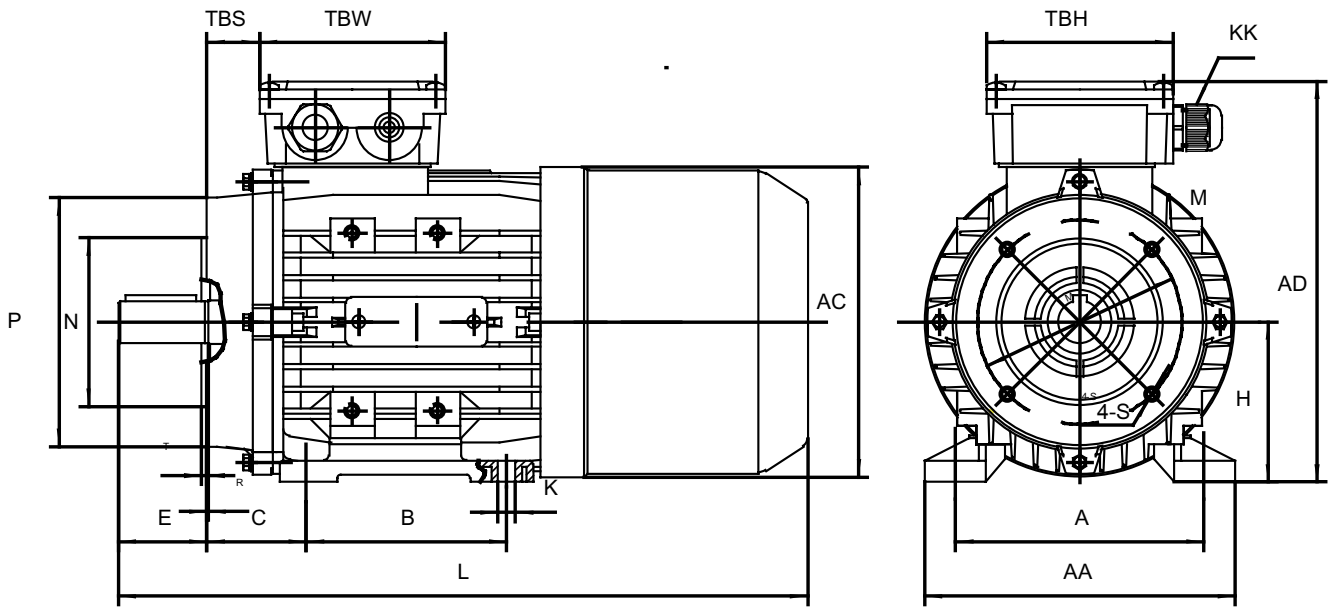


| FRAME | Foot Mounting | | | | Shaft | | | | | | | | General | | | | | | | |
|-------------------|---------------|-----|---------|-----|-------|-----|----|------|---------|-----|----|----|---------|-----|-----|------|---------|-----|-----|-----|
| | H | A | B | C | D | E | F | G | K | SS | XX | ZZ | AA | AD | HD | AC | L | TBS | TBW | TBH |
| 56 | 56 | 90 | 71 | 36 | Φ9 | 20 | 3 | 7.2 | 5.8*8.8 | M4 | 9 | 12 | 110 | 152 | 96 | Φ110 | 233 | 14 | 88 | 88 |
| 63 | 63 | 100 | 80 | 40 | Φ11 | 23 | 4 | 8.5 | 7*10 | M4 | 10 | 14 | 124 | 169 | 106 | Φ121 | 265 | 14 | 94 | 94 |
| 71 ^{**} | 71 | 112 | 90 | 45 | Φ14 | 30 | 5 | 11 | 7*10 | M5 | 12 | 17 | 140 | 184 | 113 | Φ139 | 287/301 | 20 | 94 | 94 |
| 80 | 80 | 125 | 100 | 50 | Φ19 | 40 | 6 | 15.5 | 10*13 | M6 | 16 | 21 | 160 | 211 | 131 | Φ156 | 340 | 27 | 105 | 105 |
| 90S | 90 | 140 | 100 | 56 | Φ24 | 50 | 8 | 20 | 10*13 | M8 | 19 | 25 | 175 | 228 | 138 | Φ175 | 356 | 30 | 105 | 105 |
| 90L1/L2 | 90 | 140 | 125 | 56 | Φ24 | 50 | 8 | 20 | 10*13 | M8 | 19 | 25 | 175 | 228 | 138 | Φ175 | 381/411 | 30 | 105 | 105 |
| 100 ^{**} | 100 | 160 | 140 | 63 | Φ28 | 60 | 8 | 24 | 12*15 | M10 | 22 | 30 | 200 | 248 | 148 | Φ196 | 434/452 | 26 | 105 | 105 |
| 112 | 112 | 190 | 140 | 70 | Φ28 | 60 | 8 | 24 | 12*15 | M10 | 22 | 30 | 230 | 278 | 166 | Φ221 | 465 | 32 | 112 | 112 |
| 132S | 132 | 216 | 140 | 89 | Φ38 | 80 | 10 | 33 | 12*15 | M12 | 28 | 37 | 255 | 316 | 184 | Φ256 | 518 | 38 | 112 | 112 |
| 132M/L | 132 | 216 | 178 | 89 | Φ38 | 80 | 10 | 33 | 12*15 | M12 | 28 | 37 | 255 | 316 | 184 | Φ256 | 556/582 | 38 | 112 | 112 |
| 160M/L | 160 | 254 | 210/254 | 108 | Φ42 | 110 | 12 | 37 | 15*19 | M16 | 36 | 45 | 314 | 282 | 222 | Φ313 | 701 | 64 | 143 | 143 |

| FRAME | KK | B14 | | | | | | B14B | | | | | | | | | | | | | |
|-------|-----------|------|------|------|-----|-----|---|------|------|------|-----|-----|---|--|--|--|--|--|--|--|--|
| | | N | M | P | S | T | R | N | M | P | T | S | R | | | | | | | | |
| 56 | 1-M16*1.5 | Φ50 | Φ65 | Φ80 | M5 | 2.5 | 0 | | | | | | | | | | | | | | |
| 63 | 1-M16*1.5 | Φ60 | Φ75 | Φ90 | M5 | 2.5 | 0 | Φ80 | Φ100 | Φ120 | | | | | | | | | | | |
| 71 | 1-M20*1.5 | Φ70 | Φ85 | Φ105 | M6 | 2.5 | 0 | Φ95 | Φ115 | Φ140 | 3 | M8 | 0 | | | | | | | | |
| 80 | 1-M20*1.5 | Φ80 | Φ100 | Φ120 | M6 | 3 | 0 | Φ110 | Φ130 | Φ160 | 3.5 | M8 | 0 | | | | | | | | |
| 90 | 1-M20*1.5 | Φ95 | Φ115 | Φ140 | M8 | 3 | 0 | Φ110 | Φ130 | Φ160 | 3.5 | M8 | 0 | | | | | | | | |
| 100 | 2-M20*1.5 | Φ110 | Φ130 | Φ160 | M8 | 3.5 | 0 | Φ130 | Φ165 | Φ200 | 3.5 | M10 | 0 | | | | | | | | |
| 112 | 2-M25*1.5 | Φ110 | Φ130 | Φ160 | M8 | 3.5 | 0 | Φ130 | Φ165 | Φ200 | 3.5 | M10 | 0 | | | | | | | | |
| 132 | 2-M25*1.5 | Φ130 | Φ165 | Φ200 | M10 | 3.5 | 0 | Φ180 | Φ215 | Φ250 | 4 | M12 | 0 | | | | | | | | |
| 160 | 2-M32*1.5 | Φ180 | Φ215 | Φ250 | M12 | 4 | 0 | | | | | | | | | | | | | | |

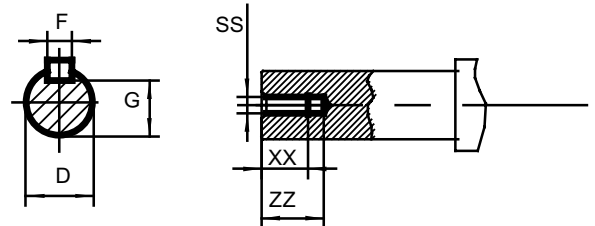


Der Hersteller behält sich technische Änderungen vor. All information under reserve of liability.



| FRAME | Foot Mounting | | | | Shaft | | | | | | | | General | | | | | | | |
|---------|---------------|-----|---------|-----|-------|-----|----|------|---------|-----|----|----|---------|-----|-----|------|---------|-----|-----|-----|
| | H | A | B | C | D | E | F | G | K | SS | XX | ZZ | AA | AD | HD | AC | L | TBS | TBW | TBH |
| 56 | 56 | 90 | 71 | 36 | Φ9 | 20 | 3 | 7.2 | 5.8*8.8 | M4 | 9 | 12 | 110 | 152 | 96 | Φ110 | 233 | 14 | 88 | 88 |
| 63 | 63 | 100 | 80 | 40 | Φ11 | 23 | 4 | 8.5 | 7*10 | M4 | 10 | 14 | 124 | 169 | 106 | Φ121 | 265 | 14 | 94 | 94 |
| 71** | 71 | 112 | 90 | 45 | Φ14 | 30 | 5 | 11 | 7*10 | M5 | 12 | 17 | 140 | 184 | 113 | Φ139 | 287/301 | 20 | 94 | 94 |
| 80 | 80 | 125 | 100 | 50 | Φ19 | 40 | 6 | 15.5 | 10*13 | M6 | 16 | 21 | 160 | 211 | 131 | Φ156 | 340 | 27 | 105 | 105 |
| 90S | 90 | 140 | 100 | 56 | Φ24 | 50 | 8 | 20 | 10*13 | M8 | 19 | 25 | 175 | 228 | 138 | Φ175 | 356 | 30 | 105 | 105 |
| 90L1/L2 | 90 | 140 | 125 | 56 | Φ24 | 50 | 8 | 20 | 10*13 | M8 | 19 | 25 | 175 | 228 | 138 | Φ175 | 381/411 | 30 | 105 | 105 |
| 100** | 100 | 160 | 140 | 63 | Φ28 | 60 | 8 | 24 | 12*15 | M10 | 22 | 30 | 200 | 248 | 148 | Φ196 | 434/452 | 26 | 105 | 105 |
| 112 | 112 | 190 | 140 | 70 | Φ28 | 60 | 8 | 24 | 12*15 | M10 | 22 | 30 | 230 | 278 | 166 | Φ221 | 465 | 32 | 112 | 112 |
| 132S | 132 | 216 | 140 | 89 | Φ38 | 80 | 10 | 33 | 12*15 | M12 | 28 | 37 | 255 | 316 | 184 | Φ256 | 518 | 38 | 112 | 112 |
| 132M/L | 132 | 216 | 178 | 89 | Φ38 | 80 | 10 | 33 | 12*15 | M12 | 28 | 37 | 255 | 316 | 184 | Φ256 | 556/582 | 38 | 112 | 112 |
| 160M/L | 160 | 254 | 210/254 | 108 | Φ42 | 110 | 12 | 37 | 15*19 | M16 | 36 | 45 | 314 | 282 | 222 | Φ313 | 701 | 64 | 143 | 143 |

| FRAME | KK | B34 | | | | | | B34B | | | | | | | | | | | | | |
|-------|-----------|------|------|------|-----|-----|---|------|------|------|-----|-----|---|--|--|--|--|--|--|--|--|
| | | N | M | P | S | T | R | N | M | P | T | S | R | | | | | | | | |
| 56 | 1-M16*1.5 | Φ50 | Φ65 | Φ80 | M5 | 2.5 | 0 | | | | | | | | | | | | | | |
| 63 | 1-M16*1.5 | Φ60 | Φ75 | Φ90 | M5 | 2.5 | 0 | Φ80 | Φ100 | Φ120 | | | | | | | | | | | |
| 71 | 1-M20*1.5 | Φ70 | Φ85 | Φ105 | M6 | 2.5 | 0 | Φ95 | Φ115 | Φ140 | 3 | M8 | 0 | | | | | | | | |
| 80 | 1-M20*1.5 | Φ80 | Φ100 | Φ120 | M6 | 3 | 0 | Φ110 | Φ130 | Φ160 | 3.5 | M8 | 0 | | | | | | | | |
| 90 | 1-M20*1.5 | Φ95 | Φ115 | Φ140 | M8 | 3 | 0 | Φ110 | Φ130 | Φ160 | 3.5 | M8 | 0 | | | | | | | | |
| 100 | 2-M20*1.5 | Φ110 | Φ130 | Φ160 | M8 | 3.5 | 0 | Φ130 | Φ165 | Φ200 | 3.5 | M10 | 0 | | | | | | | | |
| 112 | 2-M25*1.5 | Φ110 | Φ130 | Φ160 | M8 | 3.5 | 0 | Φ130 | Φ165 | Φ200 | 3.5 | M10 | 0 | | | | | | | | |
| 132 | 2-M25*1.5 | Φ130 | Φ165 | Φ200 | M10 | 3.5 | 0 | Φ180 | Φ215 | Φ250 | 4 | M12 | 0 | | | | | | | | |
| 160 | 2-M32*1.5 | Φ180 | Φ215 | Φ250 | M12 | 4 | 0 | | | | | | | | | | | | | | |



Der Hersteller behält sich technische Änderungen vor. All information under reserve of liability.

| Model | Power (kW) | Current (A) | | | Current (A) | | | Current (A) | | | Speed (r/min) | Eff | | | Power factor | Tst/Tn (Times) | Tmax/Tn (Times) | Tmin/Tn (Times) | Ist/In (Times) | Noise dB(A) | Weight (Kg) |
|--------------|------------|-------------|------|------|-------------|------|------|-------------|------|------|---------------|------|------|------|--------------|----------------|-----------------|-----------------|----------------|-------------|-------------|
| | | 220V | 380V | 660V | 230V | 400V | 690V | 240V | 415V | 720V | | 100% | 75% | 50% | | | | | | | |
| BMS 631-2 | 0.18 | 0.92 | 0.53 | 0.31 | 0.88 | 0.51 | 0.29 | 0.85 | 0.49 | 0.28 | 2780 | 66.5 | 64.2 | 56.8 | 0.77 | 2.3 | 2.5 | 2.4 | 4.1 | 61 | 4.0 |
| BMS 632-2 | 0.25 | 1.19 | 0.69 | 0.40 | 1.14 | 0.65 | 0.38 | 1.09 | 0.63 | 0.36 | 2780 | 69.8 | 68.8 | 62.8 | 0.79 | 2.6 | 2.5 | 2.4 | 4.3 | 61 | 4.2 |
| BMS 63P-2 | 0.37 | 1.72 | 1.00 | 0.57 | 1.65 | 0.95 | 0.55 | 1.58 | 0.91 | 0.53 | 2750 | 71.4 | 71.2 | 65.9 | 0.79 | 2.8 | 2.6 | 2.6 | 4.7 | 62 | 4.7 |
| BMS 711-2 | 0.37 | 1.70 | 0.99 | 0.57 | 1.63 | 0.94 | 0.54 | 1.56 | 0.90 | 0.52 | 2830 | 71.3 | 70.4 | 65.2 | 0.8 | 2.8 | 2.9 | 2 | 5.9 | 64 | 5.2 |
| BMS 712-2 | 0.55 | 2.52 | 1.46 | 0.84 | 2.41 | 1.39 | 0.80 | 2.31 | 1.34 | 0.77 | 2815 | 71.6 | 71 | 66.1 | 0.8 | 2.7 | 2.7 | 1.8 | 6 | 64 | 6.0 |
| BMS 71P-2 | 0.75 | 3.25 | 1.88 | 1.08 | 3.11 | 1.79 | 1.04 | 2.98 | 1.72 | 0.99 | 2820 | 73.8 | 73.9 | 70.3 | 0.82 | 3.0 | 3.0 | 2.0 | 6.6 | 65 | 7.0 |
| BMS 801-2 | 0.75 | 3.15 | 1.83 | 1.05 | 3.02 | 1.73 | 1.01 | 2.89 | 1.67 | 0.96 | 2830 | 75.2 | 75.6 | 72.2 | 0.83 | 3 | 2.8 | 2 | 6.2 | 67 | 8.7 |
| BMS 802-2 | 1.1 | 4.40 | 2.55 | 1.47 | 4.21 | 2.42 | 1.40 | 4.04 | 2.33 | 1.35 | 2840 | 79 | 79.8 | 77.7 | 0.83 | 2.6 | 3.1 | 2.6 | 6.1 | 67 | 10.0 |
| BMS 80P-2 | 1.5 | 5.70 | 3.30 | 1.90 | 5.46 | 3.14 | 1.82 | 5.23 | 3.02 | 1.74 | 2820 | 81.2 | 82.5 | 81.3 | 0.85 | 3.2 | 3 | 2.5 | 7.2 | 70 | 11.2 |
| BMS 90S-2 | 1.5 | 5.73 | 3.32 | 1.91 | 5.48 | 3.15 | 1.83 | 5.25 | 3.04 | 1.75 | 2850 | 80.8 | 81.2 | 78.9 | 0.85 | 2.8 | 3.3 | 2.6 | 7.7 | 72 | 12.0 |
| BMS 90L1-2 | 2.2 | 8.19 | 4.74 | 2.73 | 7.84 | 4.51 | 2.61 | 7.51 | 4.34 | 2.50 | 2860 | 82.9 | 83.4 | 81.4 | 0.85 | 3.7 | 3.9 | 3.3 | 8.8 | 72 | 14.5 |
| BMS 90PL2-2 | 3 | 11.1 | 6.43 | 3.70 | 10.6 | 6.11 | 3.54 | 10.2 | 5.89 | 3.39 | 2830 | 82.4 | 83.5 | 82.3 | 0.86 | 4.4 | 4.2 | 3.5 | 8 | 74 | 15.0 |
| BMS 100L1-2 | 3 | 10.9 | 6.32 | 3.64 | 10.4 | 6.00 | 3.48 | 10.0 | 5.78 | 3.33 | 2875 | 83.9 | 84.5 | 83 | 0.86 | 2.8 | 3.2 | 2 | 8.1 | 76 | 20.0 |
| BMS 100PL2-2 | 4 | 13.8 | 7.99 | 4.60 | 13.2 | 7.59 | 4.40 | 12.6 | 7.31 | 4.22 | 2870 | 85.5 | 86.5 | 85.8 | 0.89 | 3.2 | 3.4 | 2.2 | 8.8 | 77 | 24.0 |
| BMS 112M-2 | 4 | 13.2 | 7.63 | 4.40 | 12.6 | 7.25 | 4.20 | 12.1 | 6.99 | 4.03 | 2870 | 85.6 | 87.0 | 86.8 | 0.93 | 2.6 | 2.85 | 1.75 | 8.1 | 77 | 26.0 |
| BMS 112PL-2 | 5.5 | 18.0 | 10.4 | 6.00 | 17.2 | 9.9 | 5.74 | 16.5 | 9.5 | 5.50 | 2890 | 87.1 | 88 | 87.6 | 0.92 | 3.1 | 3.3 | 2 | 9.4 | 78 | 29.3 |
| BMS 132S1-2 | 5.5 | 18.5 | 10.7 | 6.17 | 17.7 | 10.2 | 5.90 | 17.0 | 9.8 | 5.65 | 2900 | 86.6 | 87.4 | 86.5 | 0.90 | 2.25 | 3.1 | 1.5 | 7.9 | 80 | 38.4 |
| BMS 132S2-2 | 7.5 | 24.6 | 14.2 | 8.19 | 23.5 | 13.5 | 7.84 | 22.5 | 13.0 | 7.51 | 2900 | 88.0 | 88.8 | 88.3 | 0.91 | 2.4 | 3.25 | 1.5 | 8.5 | 80 | 41.3 |
| BMS 132PM1-2 | 9.2 | 30.8 | 17.8 | 10.3 | 29.5 | 17.0 | 9.83 | 28.3 | 16.3 | 9.42 | 2930 | 88 | 88 | 86.4 | 0.89 | 2 | 2.2 | 1.2 | 7.5 | 81 | 48.2 |
| BMS 132PM2-2 | 11 | 36.3 | 21.0 | 12.1 | 34.7 | 20.0 | 11.6 | 33.3 | 19.2 | 11.1 | 2930 | 88.4 | 88.6 | 87.5 | 0.9 | 2 | 2.2 | 1.2 | 7.5 | 83 | 52.2 |
| BMS 160M1-2 | 11 | 36.4 | 21.1 | 12.1 | 34.8 | 20.0 | 11.6 | 33.4 | 19.3 | 11.1 | 2920 | 88.8 | 89.4 | 88.6 | 0.89 | 2.6 | 2.95 | 1.85 | 7.1 | 86 | 76.0 |
| BMS 160M2-2 | 15 | 49.3 | 28.5 | 16.4 | 47.2 | 27.1 | 15.7 | 45.2 | 26.1 | 15.1 | 2910 | 89.1 | 90.0 | 89.6 | 0.90 | 2.2 | 2.8 | 1.8 | 6.4 | 86 | 83.0 |
| BMS 160L-2 | 18.5 | 59.3 | 34.4 | 19.8 | 56.8 | 32.6 | 18.9 | 54.4 | 31.5 | 18.1 | 2930 | 90.3 | 90.9 | 90.3 | 0.91 | 2.9 | 3.05 | 1.65 | 8.4 | 86 | 92.3 |
| | | | | | | | | | | | | | | | | | | | | | |
| BMS 631-4 | 0.12 | 0.89 | 0.51 | 0.30 | 0.85 | 0.49 | 0.28 | 0.81 | 0.47 | 0.27 | 1390 | 58.5 | 54.3 | 45.6 | 0.61 | 2.65 | 2.8 | 2.7 | 3.2 | 52 | 3.7 |
| BMS 632-4 | 0.18 | 1.15 | 0.67 | 0.38 | 1.10 | 0.63 | 0.37 | 1.06 | 0.61 | 0.35 | 1365 | 64.2 | 62.5 | 55.9 | 0.64 | 2.8 | 2.55 | 2.4 | 3.6 | 52 | 4.2 |
| BMS 63P-4 | 0.25 | 1.45 | 0.84 | 0.48 | 1.39 | 0.80 | 0.46 | 1.33 | 0.77 | 0.44 | 1370 | 68.3 | 67.5 | 62.1 | 0.66 | 2.7 | 2.7 | 2.4 | 3.9 | 54 | 5.0 |
| BMS 711-4 | 0.25 | 1.38 | 0.80 | 0.46 | 1.32 | 0.76 | 0.44 | 1.27 | 0.73 | 0.42 | 1395 | 65.1 | 63.1 | 55.8 | 0.73 | 2 | 2.15 | 1.6 | 4.2 | 55 | 5.06 |
| BMS 712-4 | 0.37 | 1.90 | 1.10 | 0.63 | 1.82 | 1.05 | 0.61 | 1.74 | 1.01 | 0.58 | 1390 | 68.6 | 68.2 | 62.9 | 0.74 | 2.25 | 2.35 | 1.95 | 4.6 | 55 | 5.96 |
| BMS 71P-4 | 0.55 | 2.81 | 1.63 | 0.94 | 2.69 | 1.54 | 0.90 | 2.57 | 1.49 | 0.86 | 1390 | 71.9 | 71.6 | 66.8 | 0.72 | 2.8 | 2.8 | 2.4 | 4.8 | 57 | 6.5 |
| BMS 801-4 | 0.55 | 2.74 | 1.59 | 0.91 | 2.62 | 1.51 | 0.87 | 2.51 | 1.45 | 0.84 | 1400 | 70.9 | 70.5 | 65.5 | 0.74 | 2.25 | 2.55 | 1.95 | 4.9 | 58 | 8.1 |
| BMS 802-4 | 0.75 | 3.36 | 1.94 | 1.12 | 3.21 | 1.85 | 1.07 | 3.08 | 1.78 | 1.03 | 1390 | 74.4 | 76.0 | 73.9 | 0.79 | 2.5 | 2.55 | 2.05 | 5.4 | 58 | 9.1 |
| BMS 80P-4 | 1.1 | 4.90 | 2.84 | 1.63 | 4.69 | 2.69 | 1.56 | 4.49 | 2.60 | 1.50 | 1390 | 74.6 | 75.7 | 73.3 | 0.79 | 2.9 | 2.9 | 2.4 | 5.9 | 60 | 11.0 |
| BMS 90S-4 | 1.1 | 4.90 | 2.83 | 1.63 | 4.68 | 2.69 | 1.56 | 4.49 | 2.60 | 1.50 | 1400 | 75.5 | 76.7 | 74.4 | 0.78 | 2.9 | 2.7 | 2.15 | 6 | 61 | 12.0 |
| BMS 90L1-4 | 1.5 | 6.48 | 3.75 | 2.16 | 6.20 | 3.56 | 2.07 | 5.94 | 3.44 | 1.98 | 1410 | 79.6 | 80.2 | 78.0 | 0.76 | 3.4 | 3.3 | 2.7 | 6.9 | 61 | 14.8 |
| BMS 90PL2-4 | 2.2 | 9.76 | 5.65 | 3.25 | 9.33 | 5.37 | 3.11 | 8.94 | 5.17 | 2.98 | 1410 | 78.9 | 79.4 | 77 | 0.75 | 3.8 | 2.6 | 3.2 | 7.2 | 63 | 17.6 |
| BMS 100L1-4 | 2.2 | 8.71 | 5.05 | 2.90 | 8.34 | 4.79 | 2.78 | 7.99 | 4.62 | 2.66 | 1420 | 82.0 | 83.3 | 82.3 | 0.81 | 2.4 | 2.7 | 2.15 | 6.3 | 64 | 19.2 |
| BMS 100L2-4 | 3 | 11.5 | 6.64 | 3.82 | 11.0 | 6.31 | 3.66 | 10.5 | 6.08 | 3.51 | 1430 | 83.7 | 84.8 | 83.8 | 0.82 | 2.6 | 3 | 2.15 | 6.8 | 64 | 22.5 |
| BMS 100PL3-4 | 4 | 15.2 | 8.80 | 5.07 | 14.5 | 8.36 | 4.85 | 13.9 | 8.06 | 4.65 | 1430 | 84.2 | 85.5 | 85.3 | 0.82 | 2.2 | 2.3 | 1.5 | 7 | 65 | 27.3 |
| BMS 112M-4 | 4 | 14.9 | 8.60 | 4.95 | 14.2 | 8.17 | 4.74 | 13.6 | 7.88 | 4.54 | 1440 | 84.7 | 86.0 | 85.4 | 0.83 | 2.5 | 2.9 | 2.05 | 7.1 | 65 | 29.0 |
| BMS 112PL-4 | 5.5 | 20.4 | 11.8 | 6.81 | 19.5 | 11.2 | 6.51 | 18.7 | 10.8 | 6.24 | 1435 | 85.9 | 87.1 | 86.6 | 0.82 | 2.5 | 2.95 | 2.2 | 7.2 | 68 | 35.7 |
| BMS 132S-4 | 5.5 | 19.6 | 11.4 | 6.54 | 18.76 | 10.8 | 6.25 | 18.0 | 10.4 | 5.99 | 1445 | 86.4 | 87.8 | 87.7 | 0.85 | 2.15 | 2.85 | 1.75 | 7.5 | 71 | 39.0 |
| BMS 132M-4 | 7.5 | 25.9 | 15.0 | 8.62 | 24.7 | 14.2 | 8.24 | 23.7 | 13.7 | 7.90 | 1450 | 87.6 | 88.8 | 88.5 | 0.87 | 2.1 | 2.9 | 1.65 | 8.6 | 71 | 48.6 |
| BMS 132PL1-4 | 9.2 | 31.3 | 18.1 | 10.4 | 30.0 | 17.2 | 10.0 | 28.7 | 16.6 | 9.6 | 1450 | 88.6 | 89.5 | 89.1 | 0.87 | 2.8 | 2.4 | 2 | 8.4 | 74 | 56.5 |
| BMS 132PL2-4 | 11 | 37.3 | 21.6 | 12.4 | 35.6 | 20.5 | 11.9 | 34.2 | 19.8 | 11.4 | 1450 | 90.1 | 91.1 | 91 | 0.86 | 3 | 2.5 | 2 | 8.9 | 74 | 56.5 |
| BMS 160M-4 | 11 | 39.7 | 23.0 | 13.2 | 37.9 | 21.8 | 12.6 | 36.4 | 21.0 | 12.1 | 1450 | 87.7 | 89.6 | 90.3 | 0.83 | 2.05 | 2.25 | 1.55 | 6.1 | 75 | 64.0 |
| BMS 160L1-4 | 15 | 51.9 | 30.1 | 17.3 | 49.7 | 28.5 | 16.6 | 47.6 | 27.5 | 15.9 | 1455 | 88.7 | 90.0 | 90.2 | 0.86 | 2.2 | 2.45 | 1.4 | 7.3 | 75 | 73.0 |
| BMS 160L2-4 | 18.5 | 63.1 | 36.5 | 21.0 | 60.4 | 34.7 | 20.1 | 57.9 | 33.5 | 19.3 | 1460 | 90.5 | 91 | 90.6 | 0.85 | 2.2 | 2.2 | 1.4 | 7.5 | 78 | 88.5 |

Der Hersteller behält sich technische Änderungen vor. All information under reserve of liability.

Bremsmotor- Technische Daten- 6 + 8 polig

| Model | Power (kW) | Current (A) | | | Current (A) | | | Current (A) | | | Speed (r/min) | Eff | | | Power factor | Tst/Tn (Times) | Tmax/Tn (Times) | Tmin/Tn (Times) | Ist/In (Times) | Noise dB(A) | Weight (Kg) |
|--------------|------------|-------------|------|------|-------------|-------|------|-------------|------|------|---------------|------|------|------|--------------|----------------|-----------------|-----------------|----------------|-------------|-------------|
| | | 220V | 380V | 660V | 230V | 400V | 690V | 240V | 415V | 720V | | 100% | 75% | 50% | | | | | | | |
| BMS 631-6 | 0.09 | 0.75 | 0.44 | 0.25 | 0.72 | 0.41 | 0.24 | 0.69 | 0.40 | 0.23 | 890 | 50.7 | 47.6 | 39.8 | 0.62 | 2 | 2.2 | 1.9 | 2.9 | 50 | 4.2 |
| BMS 632-6 | 0.12 | 0.97 | 0.56 | 0.32 | 0.93 | 0.54 | 0.31 | 0.89 | 0.52 | 0.30 | 895 | 53.7 | 50.9 | 43.2 | 0.60 | 2.3 | 2.2 | 2.1 | 2.8 | 50 | 4.5 |
| BMS 711-6 | 0.18 | 1.11 | 0.64 | 0.37 | 1.06 | 0.61 | 0.35 | 1.02 | 0.59 | 0.34 | 905 | 63.0 | 61.6 | 55.4 | 0.67 | 2.15 | 2.4 | 2 | 3.5 | 52 | 5.6 |
| BMS 712-6 | 0.25 | 1.56 | 0.90 | 0.52 | 1.49 | 0.86 | 0.50 | 1.43 | 0.83 | 0.48 | 885 | 62.6 | 62.0 | 55.8 | 0.67 | 2.05 | 2.3 | 2.05 | 3.2 | 52 | 6.0 |
| BMS 71P-6 | 0.37 | 2.32 | 1.34 | 0.77 | 2.22 | 1.28 | 0.74 | 2.13 | 1.23 | 0.71 | 890 | 65.4 | 64.4 | 58.2 | 0.64 | 2.3 | 2.5 | 2.3 | 3.4 | 54 | 6.8 |
| BMS 801-6 | 0.37 | 2.06 | 1.19 | 0.69 | 1.97 | 1.13 | 0.66 | 1.89 | 1.09 | 0.63 | 920 | 68.1 | 67.7 | 62.2 | 0.69 | 1.95 | 2.25 | 1.8 | 3.7 | 56 | 8.1 |
| BMS 802-6 | 0.55 | 2.74 | 1.59 | 0.91 | 2.62 | 1.51 | 0.87 | 2.51 | 1.45 | 0.84 | 920 | 72.5 | 73.0 | 69.3 | 0.73 | 2.25 | 2.45 | 2.05 | 4.3 | 56 | 9.6 |
| BMS 80P-6 | 0.75 | 3.65 | 2.11 | 1.22 | 3.49 | 2.01 | 1.16 | 3.34 | 1.93 | 1.11 | 910 | 72.9 | 74.2 | 71.3 | 0.74 | 2.2 | 2.4 | 2.1 | 4.1 | 58 | 10.0 |
| BMS 90S-6 | 0.75 | 3.83 | 2.22 | 1.28 | 3.67 | 2.11 | 1.22 | 3.52 | 2.03 | 1.17 | 920 | 72.5 | 73.3 | 70.0 | 0.71 | 1.8 | 2.2 | 1.7 | 4.1 | 59 | 11.3 |
| BMS 90L1-6 | 1.1 | 5.47 | 3.17 | 1.82 | 5.23 | 3.01 | 1.74 | 5.01 | 2.90 | 1.67 | 910 | 73.5 | 75.2 | 72.9 | 0.72 | 1.95 | 2.25 | 1.85 | 4.2 | 59 | 14.4 |
| BMS 90PL2-6 | 1.5 | 7.12 | 4.12 | 2.37 | 6.81 | 3.92 | 2.27 | 6.53 | 3.78 | 2.18 | 900 | 74.7 | 77 | 75.5 | 0.74 | 2.1 | 2.3 | 1.9 | 4.2 | 60 | 17.1 |
| BMS 100L1-6 | 1.5 | 6.77 | 3.92 | 2.26 | 6.47 | 3.72 | 2.16 | 6.20 | 3.59 | 2.07 | 935 | 78.5 | 79.9 | 78.2 | 0.74 | 2.05 | 2.35 | 1.8 | 5 | 61 | 18.8 |
| BMS 100PL2-6 | 2.2 | 9.87 | 5.71 | 3.29 | 9.44 | 5.43 | 3.15 | 9.04 | 5.23 | 3.01 | 950 | 77 | 78.4 | 77.8 | 0.76 | 2.2 | 2.2 | 1.3 | 6 | 63 | 23.8 |
| BMS 112M-6 | 2.2 | 9.3 | 5.38 | 3.10 | 8.89 | 5.11 | 2.96 | 8.52 | 4.93 | 2.84 | 925 | 79.2 | 81.8 | 81.7 | 0.78 | 1.9 | 2.25 | 1.75 | 4.7 | 64 | 25.0 |
| BMS 112PL-6 | 3 | 12.9 | 7.49 | 4.31 | 12.4 | 7.12 | 4.13 | 11.9 | 6.86 | 3.95 | 950 | 79 | 80.9 | 80.9 | 0.77 | 2.2 | 2.2 | 1.3 | 6 | 64 | 28.8 |
| BMS 132S-6 | 3 | 12.5 | 7.22 | 4.16 | 11.9 | 6.86 | 3.98 | 11.4 | 6.61 | 3.81 | 955 | 82.5 | 84.5 | 84.3 | 0.77 | 1.7 | 2.15 | 1.45 | 5.3 | 64 | 35.0 |
| BMS 132M1-6 | 4 | 16.2 | 9.39 | 5.40 | 15.5 | 8.92 | 5.17 | 14.9 | 8.59 | 4.95 | 965 | 85.2 | 85.8 | 84.4 | 0.76 | 2.3 | 2.9 | 1.6 | 6.6 | 68 | 47.6 |
| BMS 132M2-6 | 5.5 | 21.5 | 12.4 | 7.16 | 20.6 | 11.8 | 6.9 | 19.7 | 11.4 | 6.6 | 960 | 85.9 | 87.2 | 86.8 | 0.78 | 2.5 | 2.7 | 1.7 | 6.7 | 68 | 50.7 |
| BMS 132PL-6 | 7.5 | 30.1 | 17.4 | 10.0 | 28.8 | 16.5 | 9.6 | 27.6 | 15.9 | 9.2 | 960 | 85 | 86.4 | 86.4 | 0.77 | 2 | 2 | 1.3 | 6.5 | 68 | 57.2 |
| BMS 160M-6 | 7.5 | 30.3 | 17.6 | 10.1 | 29.0 | 16.7 | 9.7 | 27.8 | 16.1 | 9.3 | 970 | 86.8 | 87.6 | 86.7 | 0.75 | 2.1 | 2.7 | 1.65 | 6.1 | 68 | 66.0 |
| BMS 160L-6 | 11 | 42.5 | 24.6 | 14.2 | 40.7 | 23.4 | 13.6 | 39.0 | 22.5 | 13.0 | 965 | 87.2 | 88.6 | 88.6 | 0.78 | 2.25 | 2.35 | 1.5 | 6.9 | 73 | 83.0 |
| | | | | | | | | | | | | | | | | | | | | | |
| BMS 711-8 | 0.09 | 0.97 | 0.56 | 0.32 | 0.93 | 0.54 | 0.31 | 0.89 | 0.52 | 0.30 | 680 | 44.9 | 39.6 | 31.1 | 0.54 | 2.3 | 2.6 | 2.2 | 2.4 | 50 | 5.0 |
| BMS 712-8 | 0.12 | 1.15 | 0.67 | 0.38 | 1.10 | 0.63 | 0.37 | 1.06 | 0.61 | 0.35 | 680 | 51.7 | 47.1 | 38.4 | 0.53 | 2.5 | 2.75 | 2.5 | 2.7 | 50 | 5.6 |
| BMS 71P-8 | 0.18 | 1.51 | 0.88 | 0.50 | 1.45 | 0.83 | 0.48 | 1.39 | 0.80 | 0.46 | 670 | 55.8 | 52.5 | 44.4 | 0.56 | 2.3 | 2.5 | 2.4 | 2.8 | 52 | 7.0 |
| BMS 801-8 | 0.18 | 1.24 | 0.72 | 0.41 | 1.18 | 0.68 | 0.39 | 1.13 | 0.66 | 0.38 | 705 | 64.4 | 61.3 | 53.9 | 0.59 | 2.2 | 2.65 | 2 | 3.6 | 52 | 9.4 |
| BMS 802-8 | 0.25 | 1.64 | 0.95 | 0.55 | 1.57 | 0.90 | 0.52 | 1.51 | 0.87 | 0.50 | 700 | 66.3 | 64.3 | 57.8 | 0.60 | 2.1 | 2.5 | 2.05 | 3.5 | 52 | 10.1 |
| BMS 90S-8 | 0.37 | 2.37 | 1.37 | 0.79 | 2.26 | 1.30 | 0.75 | 2.17 | 1.25 | 0.72 | 690 | 66.3 | 65.4 | 59.6 | 0.62 | 1.55 | 2 | 1.5 | 3.2 | 56 | 12.5 |
| BMS 90L-8 | 0.55 | 3.26 | 1.89 | 1.09 | 3.12 | 1.79 | 1.04 | 2.99 | 1.73 | 1.00 | 680 | 69.0 | 69.9 | 65.8 | 0.64 | 1.6 | 1.95 | 1.6 | 3.3 | 56 | 15.3 |
| BMS 100L1-8 | 0.75 | 3.88 | 2.24 | 1.29 | 3.71 | 2.13 | 1.24 | 3.55 | 2.06 | 1.18 | 700 | 75.2 | 74.8 | 70.8 | 0.68 | 2.1 | 2.55 | 1.95 | 4.4 | 59 | 17.2 |
| BMS 100L2-8 | 1.1 | 5.16 | 2.99 | 1.72 | 4.94 | 2.84 | 1.65 | 4.73 | 2.74 | 1.58 | 685 | 74.6 | 76.7 | 75.1 | 0.75 | 1.8 | 2.15 | 1.65 | 4.1 | 59 | 19.5 |
| BMS 112M-8 | 1.5 | 7.24 | 4.19 | 2.41 | 6.93 | 3.98 | 2.31 | 6.64 | 3.84 | 2.21 | 700 | 78.3 | 78.9 | 76.4 | 0.69 | 2.2 | 2.5 | 2.1 | 4.5 | 61 | 25.5 |
| BMS 132S-8 | 2.2 | 10.0 | 5.81 | 3.35 | 9.6 | 5.52 | 3.20 | 9.20 | 5.32 | 3.07 | 705 | 78.8 | 80.7 | 79.6 | 0.73 | 1.8 | 2.25 | 1.65 | 4.5 | 64 | 34.2 |
| BMS 132M-8 | 3 | 13.0 | 7.51 | 4.33 | 12.4 | 7.14 | 4.14 | 11.9 | 6.88 | 3.96 | 705 | 80.9 | 82.6 | 81.9 | 0.75 | 2.1 | 2.5 | 1.8 | 5.1 | 64 | 40.0 |
| BMS 160M1-8 | 4 | 18.0 | 10.4 | 5.99 | 17.2 | 9.88 | 5.73 | 16.5 | 9.53 | 5.49 | 710 | 81.7 | 83.0 | 82.0 | 0.72 | 1.8 | 2.25 | 1.5 | 4.7 | 68 | 59.0 |
| BMS 160M2-8 | 5.5 | 23.4 | 13.5 | 7.79 | 22.4 | 12.9 | 7.45 | 21.4 | 12.4 | 7.14 | 715 | 84.6 | 85.7 | 84.9 | 0.73 | 2.15 | 2.55 | 1.6 | 5.2 | 68 | 69.0 |
| BMS 160L-8 | 7.5 | 30.3 | 17.5 | 10.1 | 29.0 | 16.67 | 9.66 | 27.8 | 16.1 | 9.26 | 715 | 85.8 | 87.1 | 86.7 | 0.76 | 2.15 | 2.45 | 1.4 | 5.4 | 68 | 87.0 |